



J-SYSTEM[®]

Recirculation Method Installation Instructions

 **Complete J-System[®]
Recirculation Install**

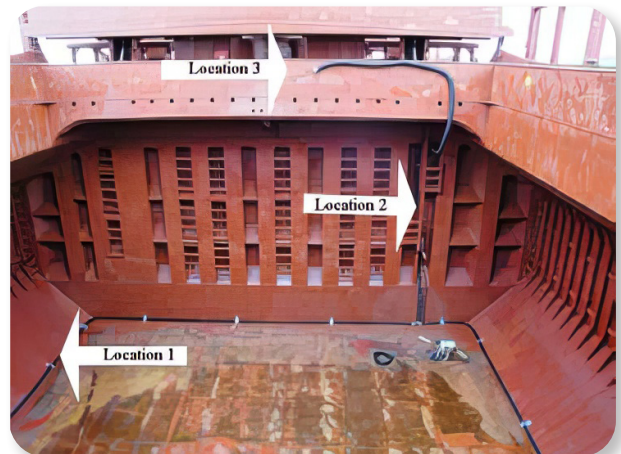
 **Only J-System[®]
Recirculation Tubing Used**

Before loading cargo, Degesch America, Inc. is required to install plastic tubing in the vessel's empty holds. This ensures compliance with the U.S. Federal Grain Inspection Service Fumigation Handbook regulations for fumigating in-transit vessels.

Our crew will be installing plastic tubing:

1. Around the perimeter of the empty hold.
2. Attached to one hold access ladder.
3. Along a section of the hatch coaming.

**This tubing should have no impact on the operation of the vessel.
DO NOT REMOVE, REARRANGE, OR TAMPER WITH THIS TUBING.**



In the above image:

(See Location 1)


(See Location 2)

(See Location 3)



www.degeschamerica.com

 info@degeschamerica.com

 540-234-9281

 153 Triangle Dr., | PO 116
Weyers Cave, VA 24486



Plastic tubing is installed on the perimeter of the cargo hold.



A connection is made between the manway opening and the bottom and top of the cargo hold.



A blower is attached to the J-System® tubing inside the manway opening allowing fumigant concentrations from the surface of the cargo to be forced to the bottom of the cargo hold.

www.degeschamerica.com

✉ info@degeschamerica.com

☎ 540-234-9281

📍 153 Triangle Dr., | PO 116
Weyers Cave, VA 24486